



PCSecurityShield
Simple, Affordable Internet Security

SECURITY

Parental Control 5.0

Parental Control

Parental Control 5.0



Installation Guide

Rev. April 2, 2008



How to Install Parental Control 5.0

Start Installation

To install the Parental Control 5.0, perform the following steps below:



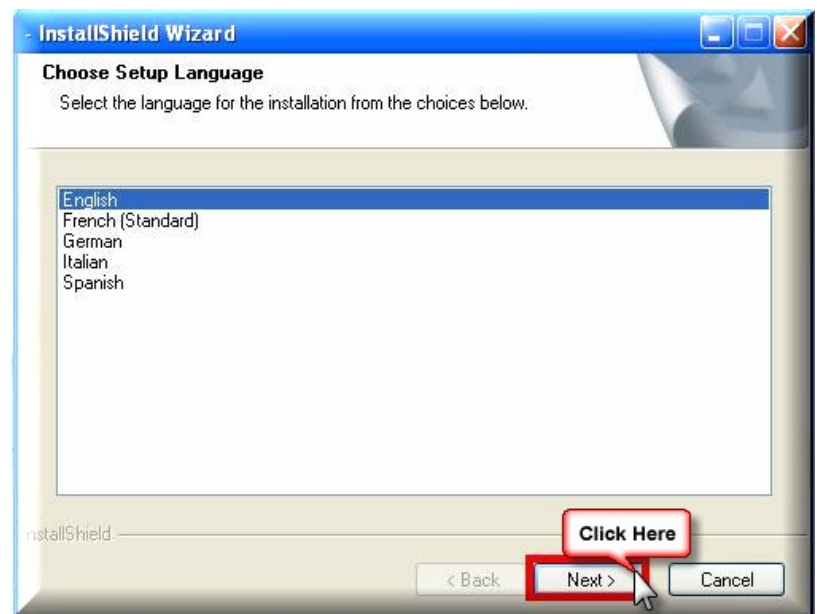
Note: Some security software may interfere with the installation of this filtering software. It is recommended that you pay attention to messages that appear on your screen while installing. If you click 'Exit' or 'Quit' during the installation process the installation will be interrupted immediately and the program will not be installed.

Important! Before installing the product, make sure to print your License Key Code provided via email. If you do not have the Key Code or the Download you can go to <http://support.pcsecurityshield.com/keys/dspLostKeys.aspx> and click on “**Key Code and Download Center**” link. Please use your order number and email address to obtain your “**activation codes**”.

If you are downloading your copy of **Parental Control 5.0** from our Website or E-mail double-click on the downloaded link to start the installation.

Step One: Setup Language

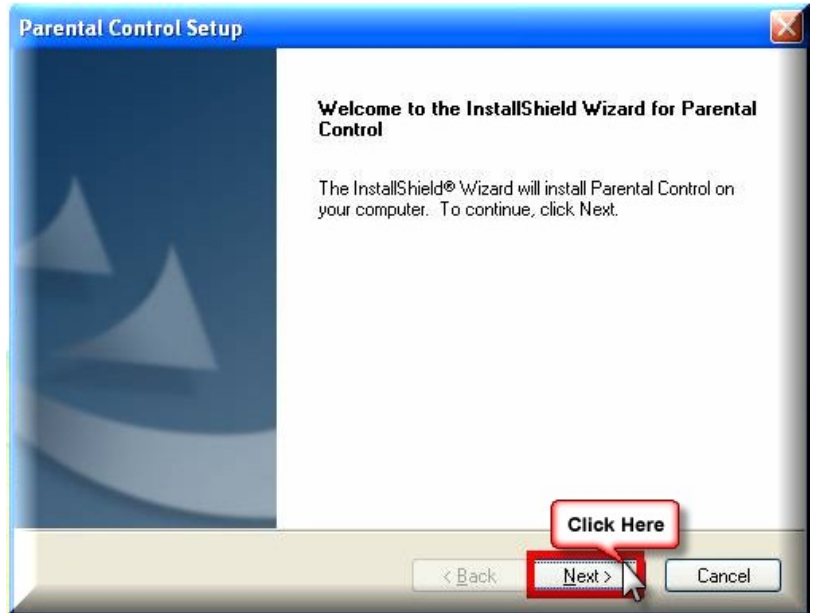
- Choose your Setup Language for the installation.
- Click “**Next**”.





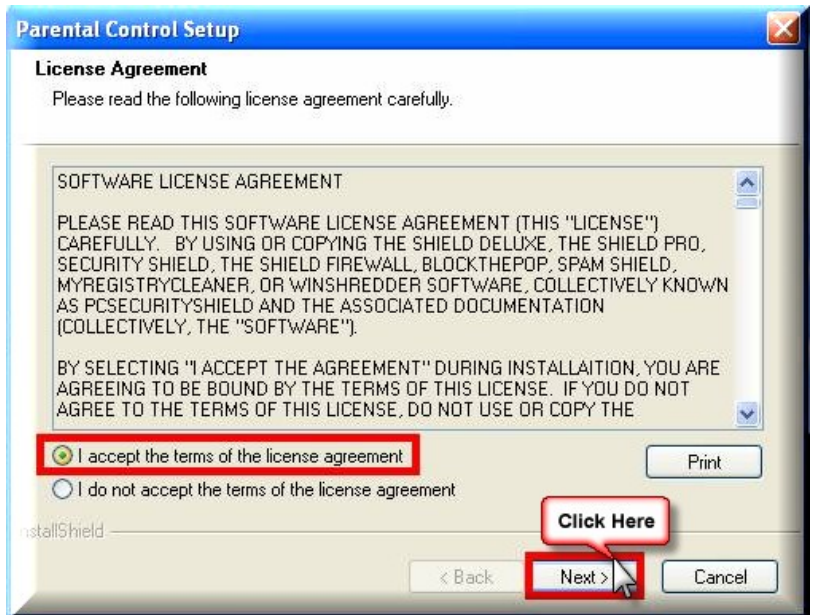
Step Two: Welcome Windows

- Click “**Next**” on the Parental Control Wizard screen.



Step Three: License Agreement

- Read the License Agreement before you proceed.
- Click on “**I accept the license agreement**” radio button
- Click “**Next**” to continue with the installation.



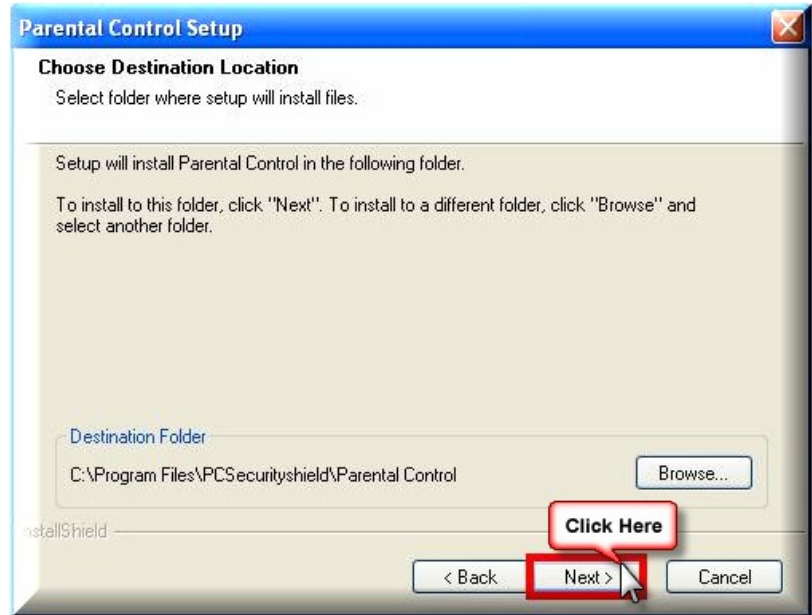


Step Four: Destination Folder

- We recommend using the default “**Destination Location**”.
- Click “**Next**” to continue.

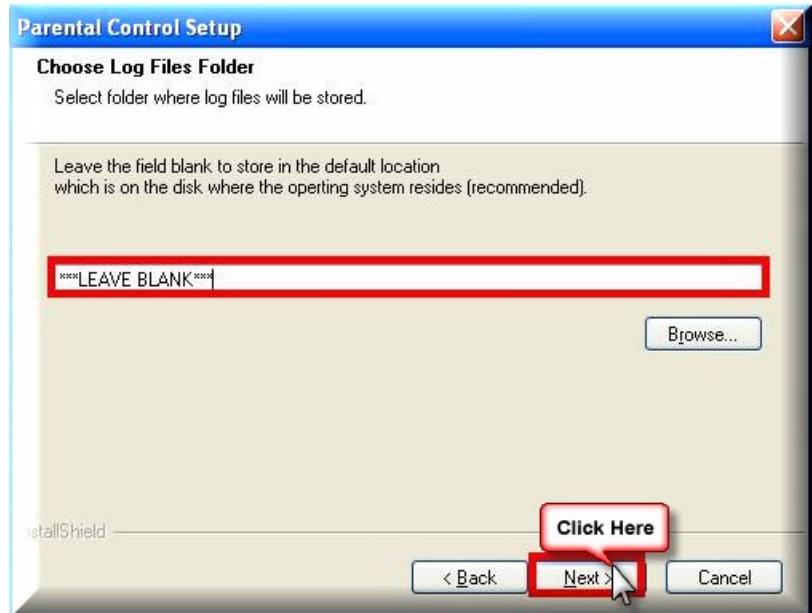


Note: PCSecurityShield applications are programmed to default to the “C” drive.



Step Five: Log Files Folder

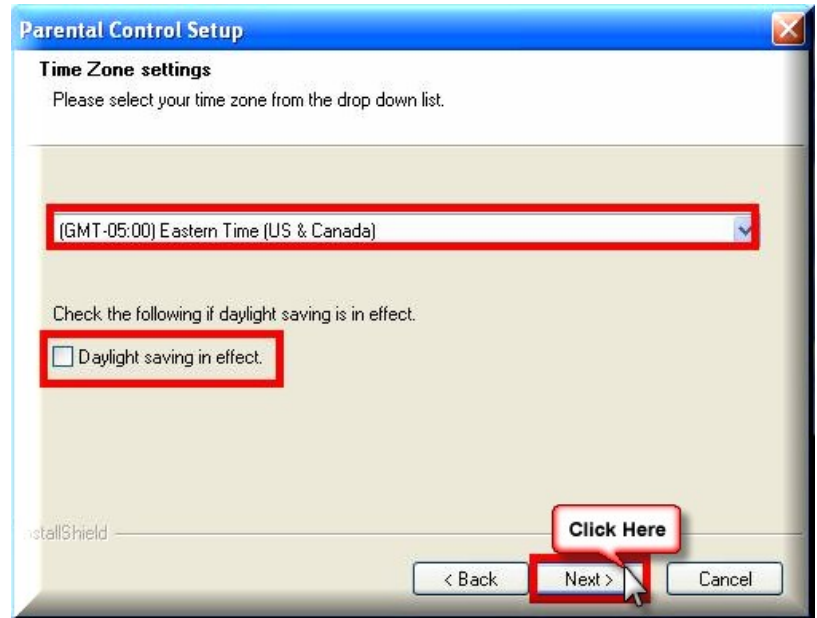
- Leave the field blank to store in the default location.
- Click “**Next**” to continue.





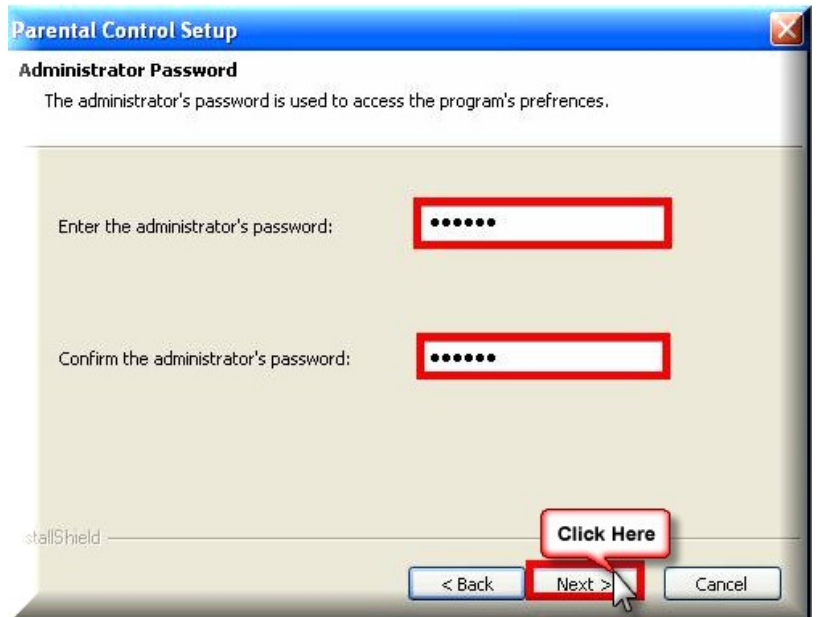
Step Six: Time Zone Settings

- Select the “**Time Zone**” that best suits your location; you may also enable the daylight savings option if applicable to your location.
- Click “**Next**”.



Step Seven: Administrator Password

- Choose a password for the Administrator. Enter and confirm the Administrator password. Make sure to take note of your password.
- Click “**Next**” when ready to proceed.

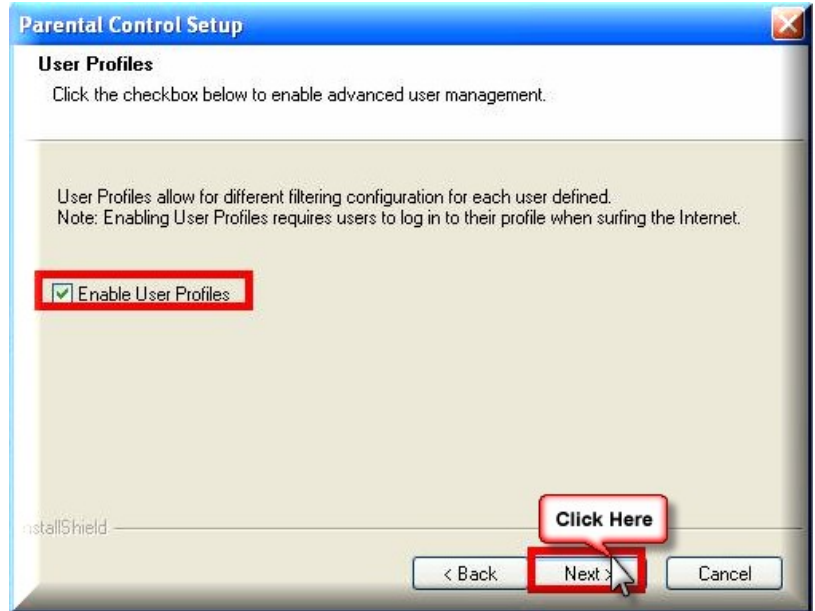




NOTE! PCSecurityShield does not store or retain your administrative password. Please keep this information in a safe place.

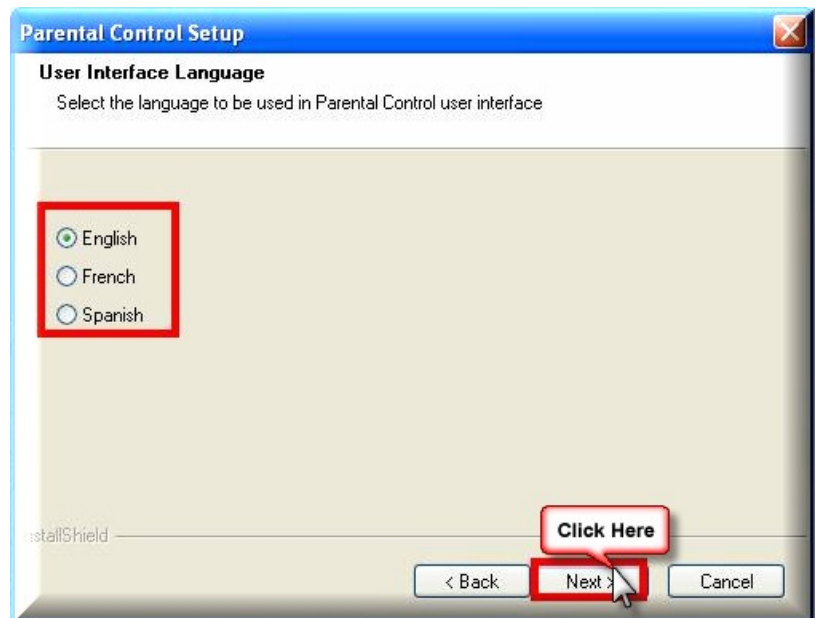
Step Eight: User Profiles

- PC-allows you to customize user profile. To do so, select the “**Enable User Profile**”.
- Click “**Next**”.



Step Nine: User Interface Language

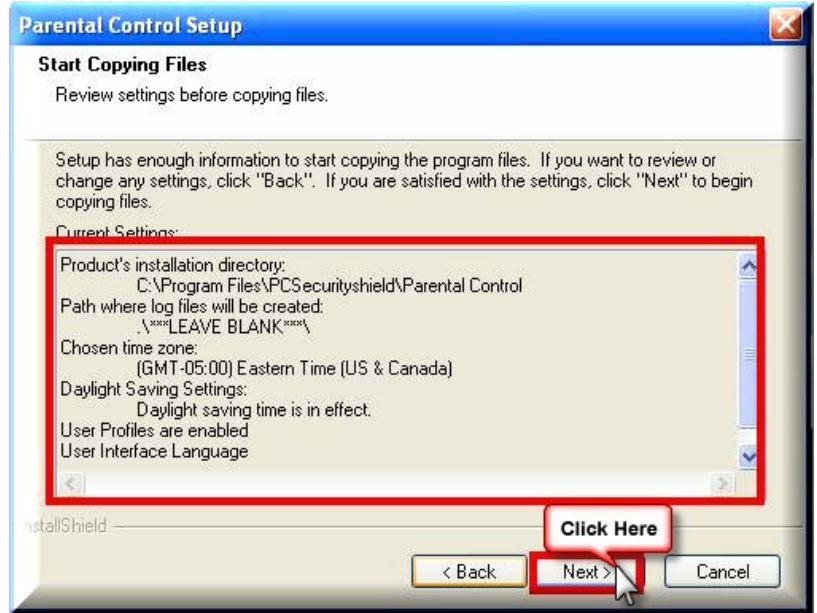
- Confirm the language suitable for your interface.
- Click “**Next**” when ready to proceed.





Step Ten: Start Copy Files

- To start copying files select the **“Next”** button.



Step Eleven: Setup Ended

- Click **“Finish”** on the following to complete the installation process.

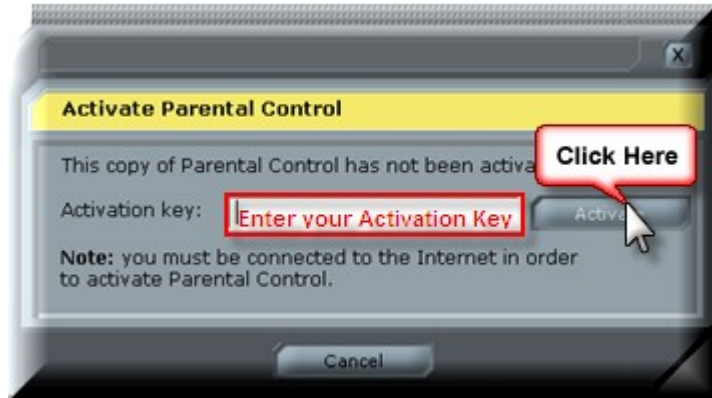




Please note the Parental Control application will automatically restart your PC.

Step Twelve: After Installation, Activate Parental Control

- Enter the “**Activation Key code (serial number)** as provided and click “**Activate**”.
- The Activation Key code are case sensitive, please make sure to enter your activation code exactly the way it is listed.



- Please make sure to Click ‘OK’” after you receive the message prompt to activate the software.
- Parental Control application will place an icon in your system tray. Your system tray is located next to your time to the right.
- To open the application, right click the icon that is located in your system tray. Once you open the software application, you will have the option to customize your filter options. To change or manipulate the Parental Control Application you are required to use administrative password.



NOTE! PCSecurityShield does not store or retain your administrative password.

Please keep this information in a safe place.

